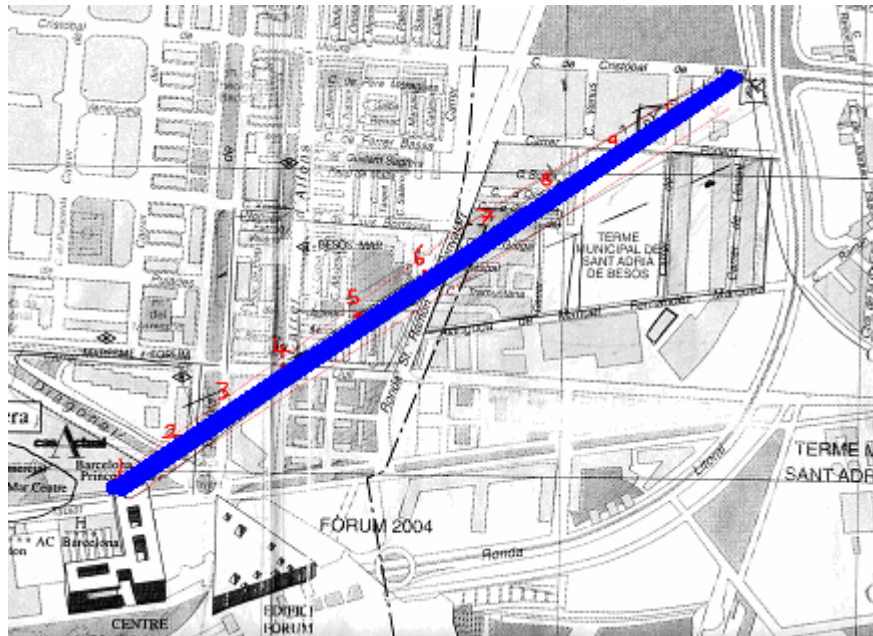


Data Analysis

In this section of my investigation I will analyse the collected data in order to draw a thorough conclusion to my study.

Transect line analysis



In general there was a decline in both residential and environmental quality as distance from The Forum increased. This is illustrated in the Spearman Rank correlations, both showing a strong negative correlation and a decrease in both residential and environmental qualities as the distance from the Forum increases. However, there are three anomalies to this perceived pattern. One is site 5 in the residential results, and the other two are sites 7 and 9 in the environmental results. There are possible reasons to account for these anomalies.

- Site 1

Site 1, the closest to The Forum, scored the highest on both residential quality and environmental, 39 and 52 respectively. This is accountable due to its location adjacent to The Forum.

- Site 2

Site 2, which is only 200m away from the Forum also scored very highly on the residential quality and environmental quality worksheets, 38 and 49 respectively.

- Site 3

Site 3 is situated on the new Rambla that was built in the neighbourhood next to La Mina. This site scored highly on the residential quality, 38, but the environmental quality was much less than the previous two sites, 34. Site 3 is only 300m from The Forum and already we can see that the environmental quality is dropping.

- Site 4

Site 4, which is situated out of The Forum's view, scored a lot less than the previous three sites. The residential results are only 29 and the environmental results are 31. This is surprising as it is situated only 400m away from The Forum and already we can see a drastic change in both residential and environmental qualities.

- Site 5

Site 5 is half way along the transect line and the quality; the residential quality at this site is an anomaly as it doesn't follow the pattern of degradation with increased distance from The Forum. The residential quality at site 5 is 32, which is considerably higher than the sites around it. The reason for this increase in residential quality is that at this site there has been refurbished apartment blocks and new ones built, this is due to the needs of the community and their complaints. Therefore, these newer blocks are obviously going to be of a better quality simply because they are newer, or newly refurbished. However, the environmental quality follows the pattern, 27, decreasing with the greater distance from The Forum.

- Site 6

Site 6 also follows the pattern of decreasing residential and environmental quality as the distance from The Forum increases. The residential quality of 20, illustrates that with a 600m distance from The Forum, there are varying residential qualities. The environmental quality, which is 26, again illustrates that the quality varies over a respectively small area. This is happening due to the increasing distance from The Forum.

- Site 7

Site 7 has again a residential quality of 20 but this time the environmental quality is an anomaly as it has increased instead of decreased, 29. Site 7 is situated inside of Old La Mina, where some work has taken place to try and improve the environment. A new park, with recreational equipment etc has been built and some benches installed. However, the score is still only 29, compared to site 1 and 2 with scores of 52 and 49 respectively, the environmental quality at this site is still poor due to its inclusion in La Mina. The residential quality again follows the decreasing pattern with a result of 20.

- Site 8

Both the residential and environmental qualities at this site are extremely poor, 19 and 24 respectively. There is a drastic contrast between sites 1,2,3 and 4 with this site and the following 2 sites. Site 8 is more or less central in La Mina, it is situated on the outer part of Old La Mina before entering into New La Mina. Both the residential and environmental qualities are dire at this site due to their distance from The Forum, and also that little time has actually passed since the regeneration processes were planned.

- Site 9

Site 9 is the second environmental quality anomaly with a score of 29. This is surprising as site 9 is situated in New La Mina. However, at site 9, as at site 7, a renewal program has taken place to install a small park, benches etc, which has made the environment that little bit pleasanter. However, the residential quality is a cause for concern, only scoring an extremely bad result of 14.

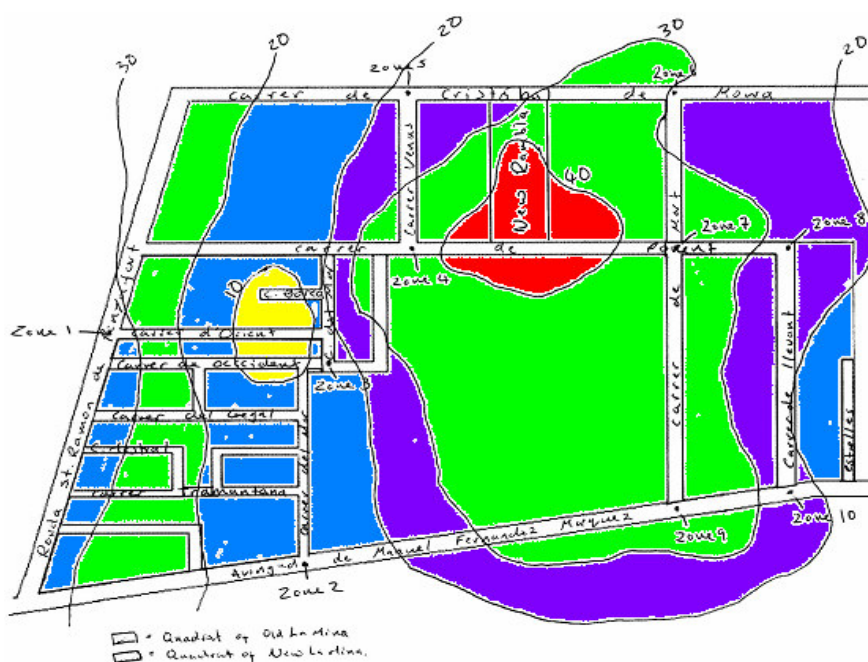
- Site 10

Site 10 has the worst results with a residential quality of 14 and an environmental of 20. The site is situated at the furthest point on the transect line from The Forum. Both the residential and environmental qualities are extremely dire at this site, for the same reasons as site 8, in complete contrast to that of site 1 and the area around The Forum. The poor qualities in the La Mina sites can be accounted for by the theory of Spiral of Decline and that La Mina is a Sink Estate.

Services and Amenities Analysis

The services and amenities around The Forum, inside Old La Mina and inside of New La Mina vary greatly. In the Diagonal Mar shopping centre, which is located next to The Forum, there are 148 gentrified services. In both Old La Mina and New La Mina there are no gentrified services. However, in Old La Mina there are 37 local services, such as small supermarkets etc and 43 in New La Mina. This illustrates that the services and amenities in La Mina cater for the community rather than the wider, more intricate market, which have a wider spending power. This is again illustrated with 13 communal services in La Mina, and none in Diagonal Mar. There is one government-funded service in Old La Mina, which is a surgery where drug addicts can acquire clean needles, to try and counter the spread of HIV in the area. There are two services which cater for people living in poverty in La Mina, but there are none in Diagonal Mar, this is because Diagonal Mar hopes to attract people with money and does not have to cater for people who are living in poverty. In La Mina, the existence of 5 workshops illustrates that jobs in the area are of low or semi skilled practices. Whereas Diagonal Mar simply caters for the market that go there and do not need to supply any everyday commodities.

People Count Analysis



The above diagram illustrates the amount of social inclusion surrounding the new Rambla. The red shaded area represents an area of 40+ people who are included socially, to see the rest of the representative area meanings see earlier in the study, in data presentation.

We can see from the diagram that the area around the new Rambla has the most social inclusion, with 40+ people congregating here to pass the time of day. A popular pastime seemed to be bringing out your birds to show to your friends. This was taking place at the points around the new Rambla. There are a number of reasons why most people were located in the area of the new Rambla. They are as follows.

1. The new Rambla supplies benches and areas for seating so that people can comfortably sit, talk and display their birds.
2. The new Rambla has a central location so that friends who do not live in the same part of the neighbourhood can come and join each other in a central position.
3. The new Rambla hosts numerous little parks for young children to play in. This means that the parents are in the same area, talking amongst each other whilst their children are enjoying themselves.

Generally as the distance from the Rambla increases so does the social interaction, although there is an area with quite a high amount of social inclusion the left hand side of the neighbourhood, in Old La Mina. There is also an area that has a very low social interaction rate; this is in the middle of Old La Mina. This is due to construction work taking place at this point.

Location of Government renewal plans etc analysis

As we can see from the diagram in the data presentation section on page 29, the location of government plans has no real pattern as the scheme is to regenerate the whole area not just certain parts. The diagram illustrates that the renewal programs are either taking place or are planned for the whole of La Mina, not just the peripheral areas. There are numerous housing renewal programs throughout the neighbourhood, new stairs, tunnelling and lifts to make life that little bit better for the inhabitants. There are also several urban parks planned and new tramline stops to make transport easier for the people living in La Mina. There is also a new school planned to replace the degraded old block. Barcelona's new university campus will be situated next to La Mina and a whole new neighbourhood is also planned. Although the Rambla is not complete, it is planned to open La Mina up to the sea. There are also road renewals taking place along many of the La Mina roads and the pavements are being renewed with benches for more social interaction.

The government is also supplying a sanitary clinic in La Mina to help the homeless and people with drug problems. It is estimated that 747 breakfasts are served a month for people unable, for whatever reason, to do it for themselves. It is also estimated that the shower facilities are used 224 times a month, with 2,804 needles also swapped monthly. The clinic also supplies contraceptives etc. The government is aware of La Mina's drug problem and it is trying to help the 54 out of 100 people who come to the clinic, who are regularly using drugs.

The government has also set up a number of motor engineering schools and general workshops, where youngsters can learn trades, throughout La Mina to counter the unemployment and delinquency that the area is infamous for. At the moment there are 43 projects taking place, with 1,489 young people taking part in these.

It is evident that the government is actually trying to solve the problems in La Mina, and not just bypass them.